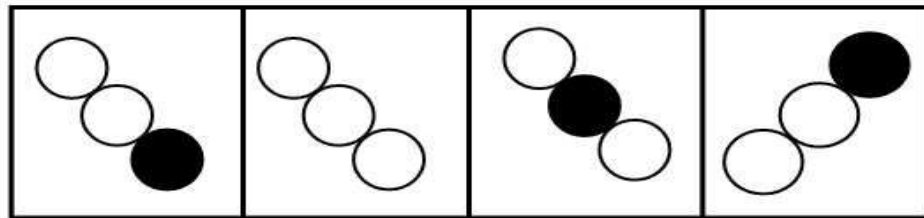
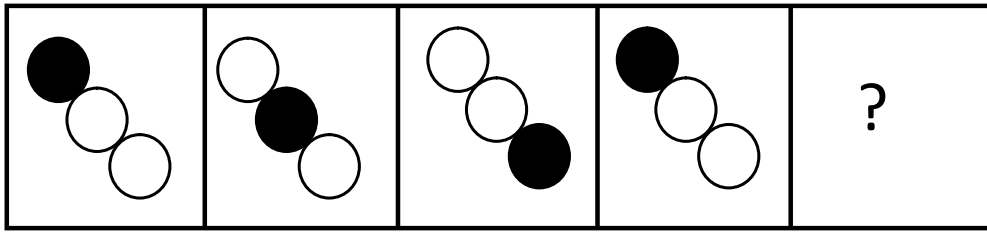


SECTION - A

1. Which option figure will come in the place of question mark ?



a.

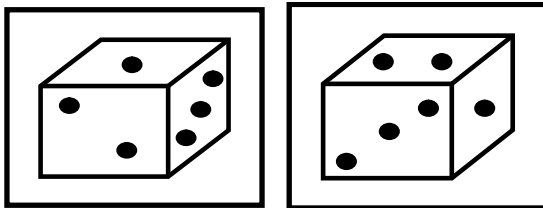
b.

c.

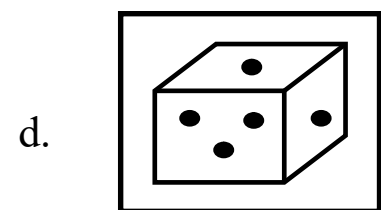
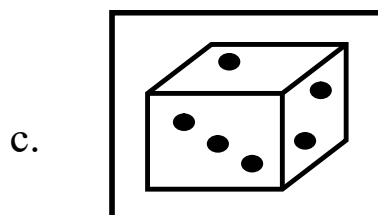
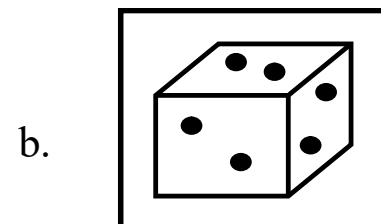
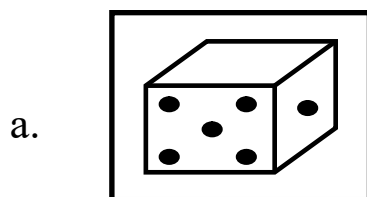
d.

2. Choose the shape which is similar to the given group of shapes.

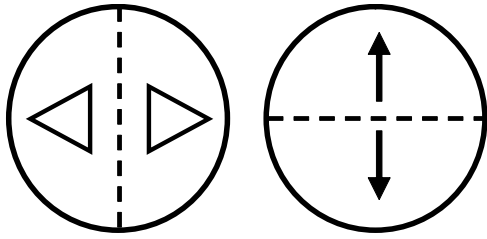
Question figures



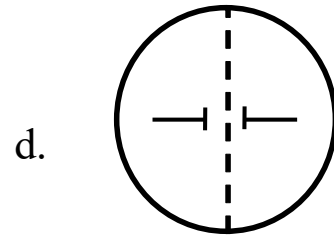
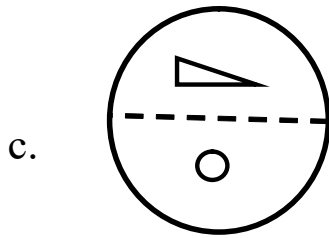
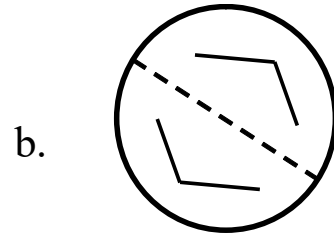
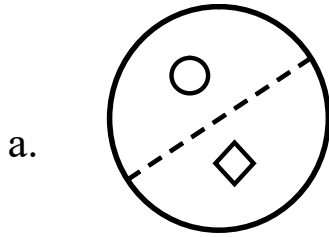
Answer figures



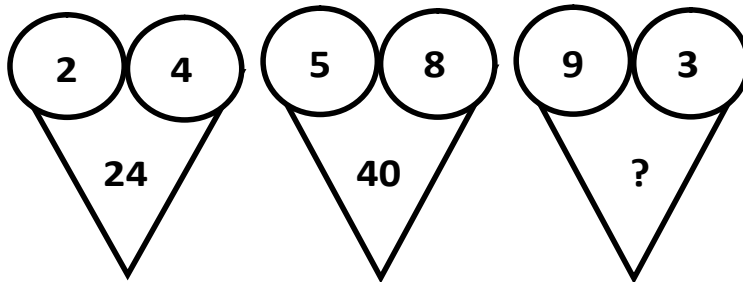
3. Which shape is similar to the following group of two shapes?
Question figures



answer figures



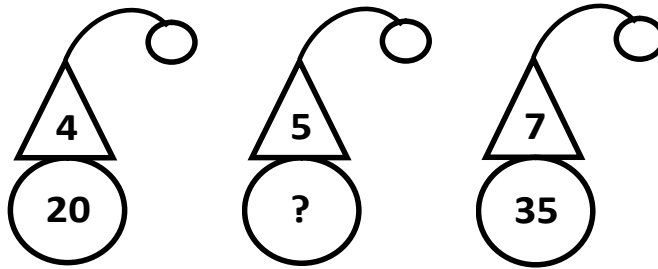
4. Which number will replace the question mark (?)



- a. 12
- c. 54

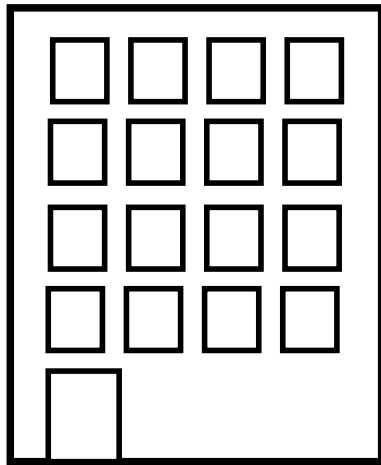
- b. 39
- d. 27

5. Find the missing number in the middle figure.



- a. 35 b. 15
c. 25 d. 30

6. Count the number of squares in the below figure.



- a. 14 b. 12
c. 18 d. 16

7. Brane has some parts of cardboard. He joins these parts to form a square. Count the number of card boards having triangular (\triangle) shape.

- a. 4 b. 6
c. 8 d. 9

SECTION - B

8. Which of the following grows throughout their life?

a.



b.



c.



d. All of these

9. A car needs food in the form of fuel. Even then it is :

a. a dead thing

b. a living thing

c. a non living thing

d. none of these

10. Gum is made from :

a. Bamboo

b. Keekar tree

c. Rubber

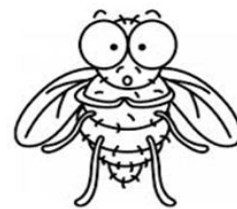
d. All of these

11. Which one of the following is the source of honey?

a.



b.



c.

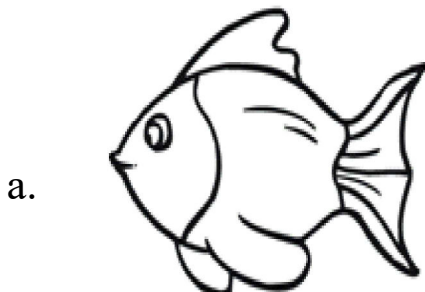


d. None of these

12. Woollen clothes are used in
- a. Summer
 - b. Hot climate
 - c. Cold region
 - d. All of these
13. Which of the following is not a water body?
- a. Lake
 - b. Pond
 - c. Rainwater
 - d. Sea
14. We send things to different places in a :
- a. Letters
 - b. Parcel
 - c. Post card
 - d. All of these

SECTION - C

15. What are the similarities between the plants bearing the flowers as shown?
- a. They have weak stems.
 - b. They have woody stems.
 - c. They produce seeds.
 - d. They grow along the ground.
- A. (a) and (b)
 - B. (a) and (d)
 - C. (b) and (c)
 - D. (a), (b) and (c)
16. Which one of the following lives in water ?



c.



d. All of these

17. In school, non living thing is :

a. Bench

b. Black board

c. Chair

d. All of these

18. Select the odd one out.

a. Nurse

b. Doctor

c. Accountant

d. Surgeon

19. Which of these is an INCORRECT manner of cleaning of our body?

a. Clean your nails with a pin

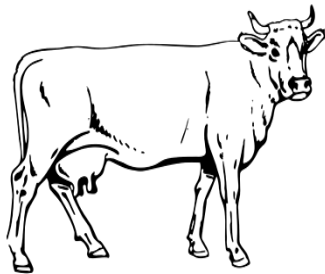
b. Rinse your mouth after every meal

c. Cover your mouth when you cough.

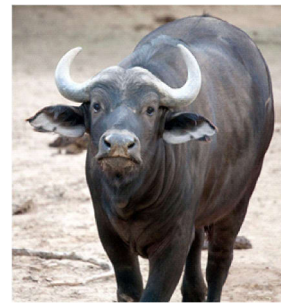
d. Clean your ears with a cotton bud

20. Milk generally comes from :

a.



b.



c.



d. All of these

21. Sheena has a bad habit of sucking her finger. Her mother is worried about this habit of her as because of this she may fall ill easily. Which of the following steps would reduce her chances of falling sick?

1. Washing hands properly
2. Cleaning her ears with towel
3. Cutting nails of fingers and toes
4. Rinsing her mouth after anything she eats

a. 2 and 4

b. 1 and 2

c. 3 only

d. 1 and 3