

SECTION - A

1. Which group of letters from the given alternatives will replace the question mark following the pattern that first pair follows ?

XTV : UQS :: PMQ : ?

- a. JKM
b. NMJ
c. MJN
d. LMO
2. Find the odd one out from the following
- a. Cardamom
b. Turmeric
c. Sugar
d. Clove
3. If in a certain code language, RAT is written as ‘*@%’ and CAT’ is written as ‘#@%’, then how will CAR be written in that language?

- a. \$%@
b. #%@
c. @*%
d. #@*

4. Sheena is taller than Nami and shorter than Lim only. Nami is not the shortest. Lim is taller than Kian. Who is the shortest ?

- a. Kian
b. Nami
c. Sheema
d. Lim

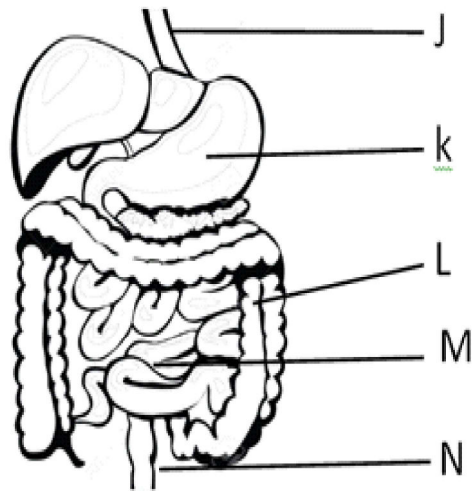
5. Which number from the given alternatives will replace the question mark ?

8	18	26
7	9	16
11	7	?

- a. 17
b. 19
c. 20
d. 18

11. In which one of the following statement, unit of mention quantity is correctly used ?
- Weight of a bus is 200 m.
 - Length of a room is 15 kg.
 - Time consumed in writing 'X' is 2 s.
 - All of these
12. Soil formation starts when rocks break down into smaller piece due to :
- Rain
 - Wind
 - Sun's heat
 - All of these
13. Match the following.
- | | |
|-------------------|----------------------|
| 1. Bonfire | a. Electrical energy |
| 2. Moving Car | b. Heat energy |
| 3. Battery | c. Mechanical energy |
| 4. Electrical fan | d. Chemical energy |
- 1 - (A), 2 - (B), 3 - (D), 4 - (C)
 - 1 - (C), 2 - (A), 3 - (B), 4 - (D)
 - 1 - (A), 2 - (C), 3 - (B), 4 - (D)
 - 1 - (B), 2 - (D), 3 - (A), 4 - (C)
14. Diarrhoea is caused due to :
- Soil pollution
 - Water pollution
 - Air pollution
 - All of these
15. Match the following :
- | | |
|-----------------------|----------------------------|
| 1. Natural Satellite | A. Heat and light to earth |
| 2. Aryabhata | B. Between Venus and Mars |
| 3. Earth lies between | C. Moon |
| 4. Sun provides | D. Man made satellite |
- 1 - (D), 2 - (B), 3 - (D), 4 - (C)
 - 1 - (C), 2 - (D), 3 - (B), 4 - (A)
 - 1 - (A), 2 - (D), 3 - (C), 4 - (B)
 - 1 - (B), 2 - (C), 3 - (D), 4 - (A)

18. The given figure shows human digestive system with parts labelled as J, K, L, M & N. In which labelled parts the following occur ?



- (1) Acid and enzymes break the food.
 (2) Absorbs only water from the food.

	(1)	(2)
a.	k	J
b.	k	M
c.	k	L
d.	L	M

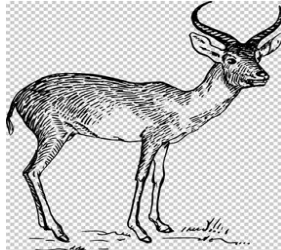
19. Rohit set up an experiment as shown in the given diagram. The diagram shows five identical balls being suspended on a rod by strings of different lengths. Rohit then cut all five strings at the same time and the balls were allowed to fall freely to the ground. Which of these statements hold true for this experiment?

- a. Ball 'a' had less gravitational potential energy than ball 'c' at the start.
 b. Ball 'b' had the greatest impact on the ground.
 c. Ball 'd' had the most gravitational potential energy at the start.
 d. Ball 'a' and 'e' had different amounts of gravitational potential energy at the start due to their different positions along the rod.

20. Rahul, Archit, Devki and Ritu were discussing about a grassland community. The community was made up of grass, antelopes and lions.



Grass



Antelope



Lion

The children made the following remarks about the grassland community :

Rahul : The Source of all energy for all the populations in the grassland community comes directly or indirectly from the Sun.

Archit : The grass population is much greater than the antelope population in order to support the energy needs of the antelope population.

Devki : There will be more lions than antelopes in the grassland community because energy is passed from the antelopes to the lions.

Ritu : Without the grass population, only the antelope population will be affected but not the lion population.

Which of the children made a correct remark ?

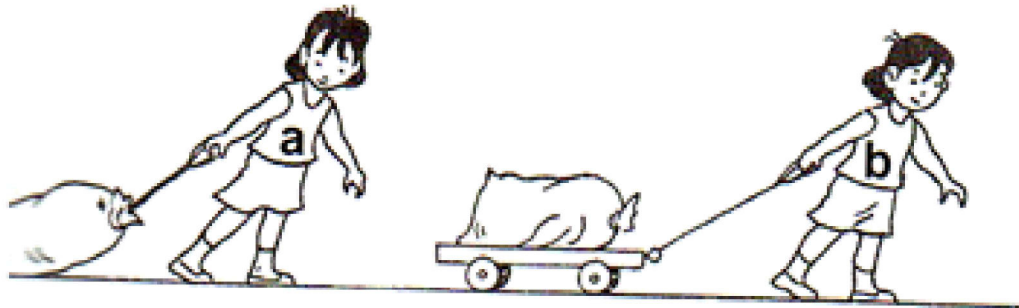
- Rahul, Archit and Devki
- Rahul only
- Ram and Archit
- All of them

21. Match column-I with column-II and select the correct option from the codes given below.

Column-I	Column-II
a. Cotton	1. National dress
b. Kimono	2. Natural fibre
c. Wool	3. Man-made fibre
d. Nylon	4. Make us feel warm

- a. (a) - 4, (b) - 2, (c) - 3, (d) - 1
- b. (a) - 2, (b) - 1, (c) - 4, (d) - 3
- c. (a) - 3, (b) - 2, (c) - 1, (d) - 4
- d. (a) - 1, (b) - 2, (c) - 4, (d) - 3

22.



Which of the following is correct about the girls moving the sack bags as shown in the above diagram ?

- A. Girl 'b' does not have to work against friction.
 - B. Girl 'a' has to work against friction.
 - C. The wheels of the trolley have reduced the friction.
- a. (A) and (C)
 - b. (B) and (C)
 - c. only (A)
 - d. Only (C)