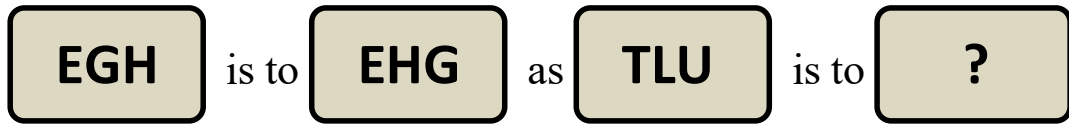



SECTION - A

1. Find the letters that will replace the question mark (?).

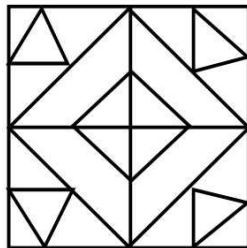


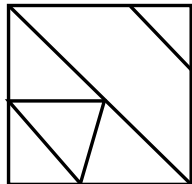
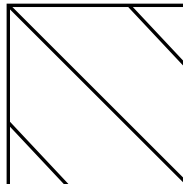
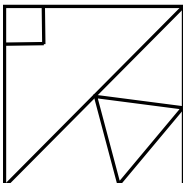
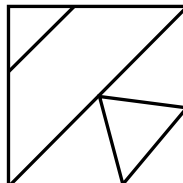
- a. UTL
- b. ULT
- c. TUL
- d. LTU

2. Choose the odd one out from the following.

- a. 
- b. 
- c. 
- d. 

3. A teacher draws a larger square on board. this larger square contains four small squares having certain designs in it. One small square is missing. Find the missing square.



- a. 
- b. 
- c. 
- d. 

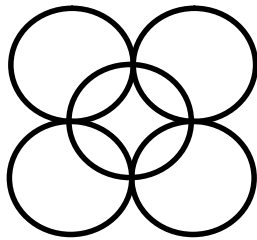
4. Rajat arranged his toys in a row. A duck toy ranks sixteenth from the left and forty ninth from the right. How many toys did Rajat has.

- a. 65
- b. 63
- c. 66
- d. 64

5. Raman is facing South-East while james is facing exactly the opposite direction in which Raman is facing. Find the direction in which Raman Facing.

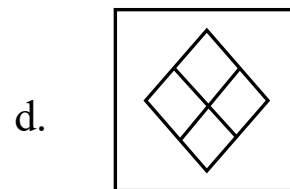
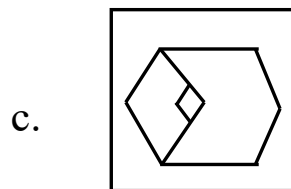
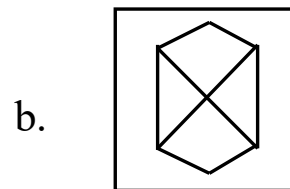
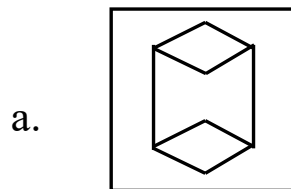
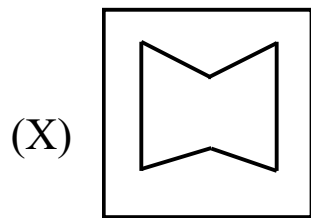
- a. South
- b. South-East
- c. East
- d. North-West

6. How many circles are there in the folloiwng figure?

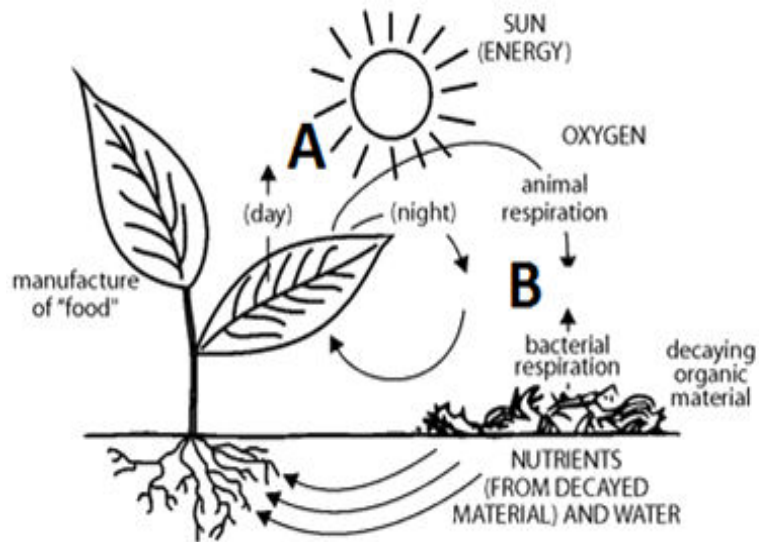


- a. 4
- b. 5
- c. 6
- d. 8

7. Find out the alternative figure which contains figure (x) as its part.



10. Complete the following diagram by filling up the A and B:



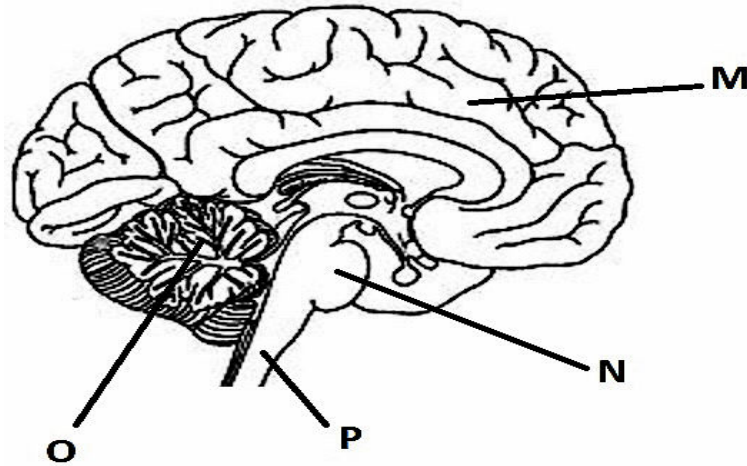
- A
- a. Oxygen
 - b. Water
 - c. Oxygen
 - d. Nitrogen

- B
- a. Carbon dioxide
 - b. oxygen
 - c. Nitrogen
 - d. Oxygen

11. Yellow bone marrow is primarily _____.

- a. for cartilage production
- b. fat storage
- c. collagen fibers and calcium salts
- d. blood stem cells

12. Identify the parts labelled as M, N, O and P in the figure and select the correct option.



- | | M | N | O | P |
|----|----------|------------|------------|-------------------|
| a. | Cerebrum | Medulla | Skull | Cerebellum |
| b. | Skull | Ceberum | Cerebellum | Medulla |
| c. | Medulla | Cerebellum | Cerebrum | Skull |
| d. | Cerebrum | Cons | Cerebellum | Medulla/Oblongata |

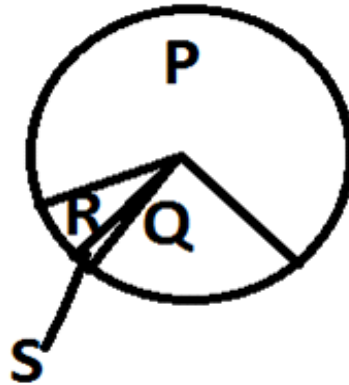
13. California imports most of its water supply. What is most of the water used for?
- agriculture
 - domestic irrigation - lawns
 - industry
 - municipal drinking water
14. Which best explains why the sun appears brighter in the day than the stars appear at night?
- the sun is much larger than the Earth
 - the sun is much larger than the other stars
 - the sun is much hotter than the other stars
 - the sun is much closer to Earth than the other stars

15. What is soil erosion?
- It is the process by which soil is formed
 - A harmful process that involves the removal and transport of soil by wind and water
 - A natural method of filtering harmful pollutants
 - A process often referred to as the 'greenhouse' effect

SECTION - C

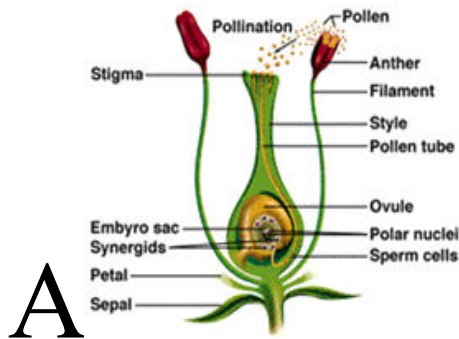
16. What is the cause of angina?
- Insufficient blood reaching the lungs.
 - Insufficient blood reaching the brain.
 - Insufficient blood reaching the heart muscle.
 - Insufficient blood reaching the leg muscles.
17. Snails produce mucus to help them move along the ground. How does the mucus help snails move?
- Mucus is cold.
 - Mucus makes the snail lighter.
 - Mucus leaves a trail.
 - Mucus reduces friction.
18. Groundwater represents how much of the world's fresh water supply?
- | | |
|--------------|--------------|
| a. about 1% | b. about 5% |
| c. about 20% | d. about 50% |
19. The all-or-none response means that
- all of the muscles in a region contract together.
 - all of the muscle fibers within a muscle contract together.
 - when a muscle fiber contracts, it contracts completely.
 - when a muscle fiber contracts, all of its ATP is changed to ADP
20. _____ based Institute of Genomics and Integrative Biology, on December 8, 2009, announced to have succeeded in completely sequencing the genome of an individual.
- | | |
|--------------|--------------|
| a. Hyderabad | b. Nasik |
| c. Jaipur | d. New Delhi |

21. Which of these is the most accurate description of air, based on the pie chart?



- P represents the % of nitrogen which is two-third of pie chart
- Q represents the % of oxygen which is three-quarters of pie chart
- R represents the % of other gases which is one-fifth of oxygen pie chart
- All of these

22. Choose the correct options by the help of diagrams.



- | | | |
|----|------------------|-------------------|
| | A | B |
| a. | Autogamy | Allogamy |
| b. | Self pollination | Cross pollination |
| c. | Both a and b | |
| d. | None of these | |