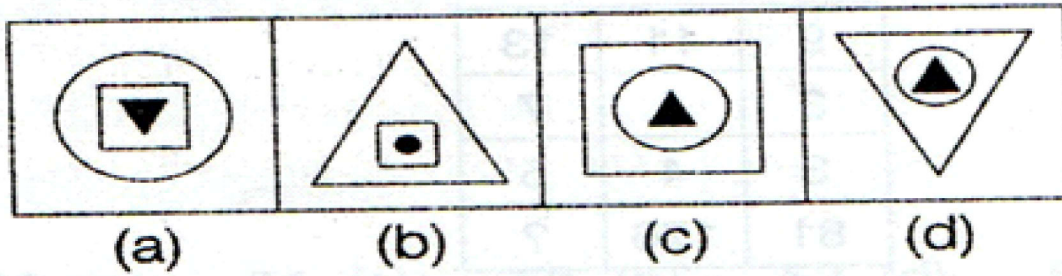


6. Find out which one is different from others.



7. Find the term which does not belong to the series..

- a. **1F5** b. **2I8**
- c. **9M4** d. **7O8**

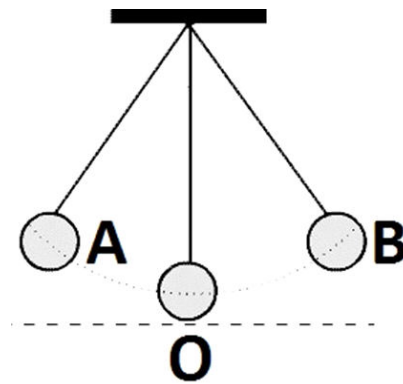
SECTION - B

8. About 90% of all fresh water is used for
- a. domestic use b. industrial use
- c. agriculture use d. none of these
9. Which one of the following conditions lead to the blowing of sea-breeze in coastal areas
- A. Land cool and sea warm
- B. Land hot and sea cool
- C. Day time
- D. Night time
- a. A and B b. A and C
- c. B and C d. B and D

13. Which of the following is not a correct precaution to be observed so as to protect from lightning during a thunderstorm?
- Do not sit near window
 - Do not lie on ground
 - Do not sit in a car
 - Do not stand under a tall tree
14. What is resistance of a conductor?
- When there are more atoms and molecules in conductor than free electrons, so as to restrict movement of electrons on getting current.
 - When there are more free electrons than molecules and there is no restriction in movement of electrons on getting current.
 - When conductor has equal amount of free electrons and atoms and molecules
 - none of these

SECTION - C

16. Observe given figure as below :



The time period of a simple pendulum is the time taken by it to travel from

- A to B and back to A
- O to A, A to B and B to A
- B to A, A to B and B to O
- A to B

17. Which of the following is the correct sequence of events in the sexual reproduction of a plant from the flower?
- pollination, seed, fertilization, germination
 - pollination, fertilization, seed, germination
 - pollination, seed, germination, fertilization
 - Pollination, fertilization, germination, seed

18. Study the informations about P, Q, R and S given below and choose the correct option for different types of animals:

P - Pulmonary

Q - Tracheal

R - Pharyngeal

S - Cutaneous

	P	Q	R	S
a.	Pigeon	Cockroach	Tadpole	Earthworm
b.	Frog	Grasshopper	Fish	Ostrich
c.	Crab	Spider	Frog	Paramecium
d.	Penguin	Mynah	Snake	Leech

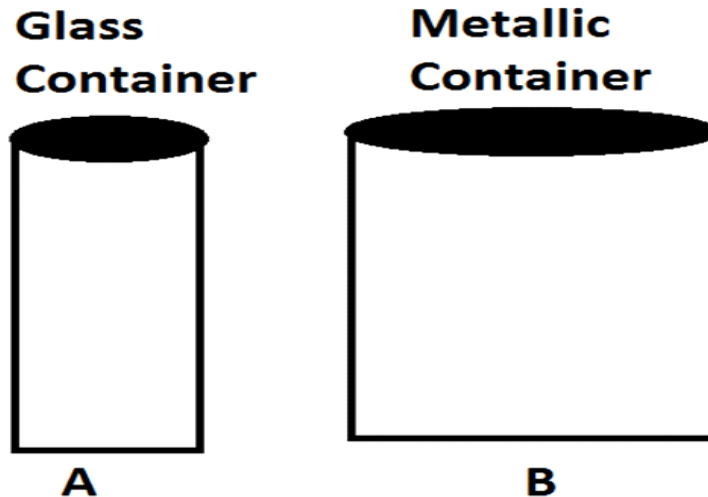
19. Which of these soils would absorb the highest amount of water?

- Black soil
- Clayey soil
- Loamy soil
- Sandy soil

15. An object is placed at a distance of 15 cm from a convex lens of focal length 110 cm. the image obtained on the screen is

- Upright and magnified
- Inverted and magnified
- Inverted and diminished
- Upright and diminished

20. Consider the following two types of containers .



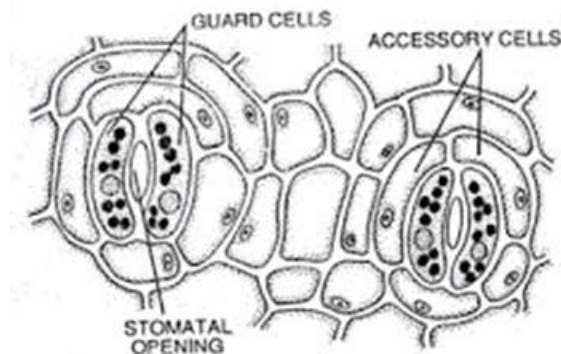
Rama preferred A for storing cut pieces of lemon. This is because

- I. A is transparent
- II. A is cheaper.
- III. B is not easily available.
- IV. B reacts with the acid present in lemon.

The correct reason(s) is/are

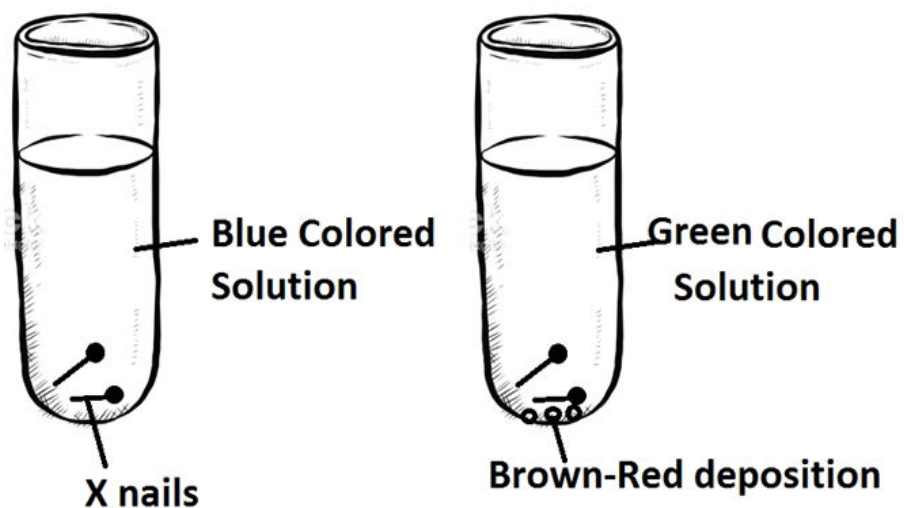
- a. I and III
- b. II and IV
- c. I and II
- d. only IV

21. Identify the dark rounded structures present inside the guard cells of stomata and what is their function?



- a. Starch bodies - storage of food
- b. Chloroplast- food synthesis
- c. Nucleus - control centre
- d. None of these

22. Study the given figure carefully.



Which of the following reactions explains the above change most appropriately

- a. $\text{ZnSO}_4 + \text{Cu} \longrightarrow \text{CuSO}_4 + \text{Zn}$
- b. $\text{CuSO}_4 + \text{Fe} \longrightarrow \text{FeSO}_4 + \text{Cu}$
- c. $\text{FeSO}_4 + \text{Cu} \longrightarrow \text{CuSO}_4 + \text{Fe}$
- d. $\text{CuSO}_4 + \text{Zn} \longrightarrow \text{ZnSO}_4 + \text{Cu}$